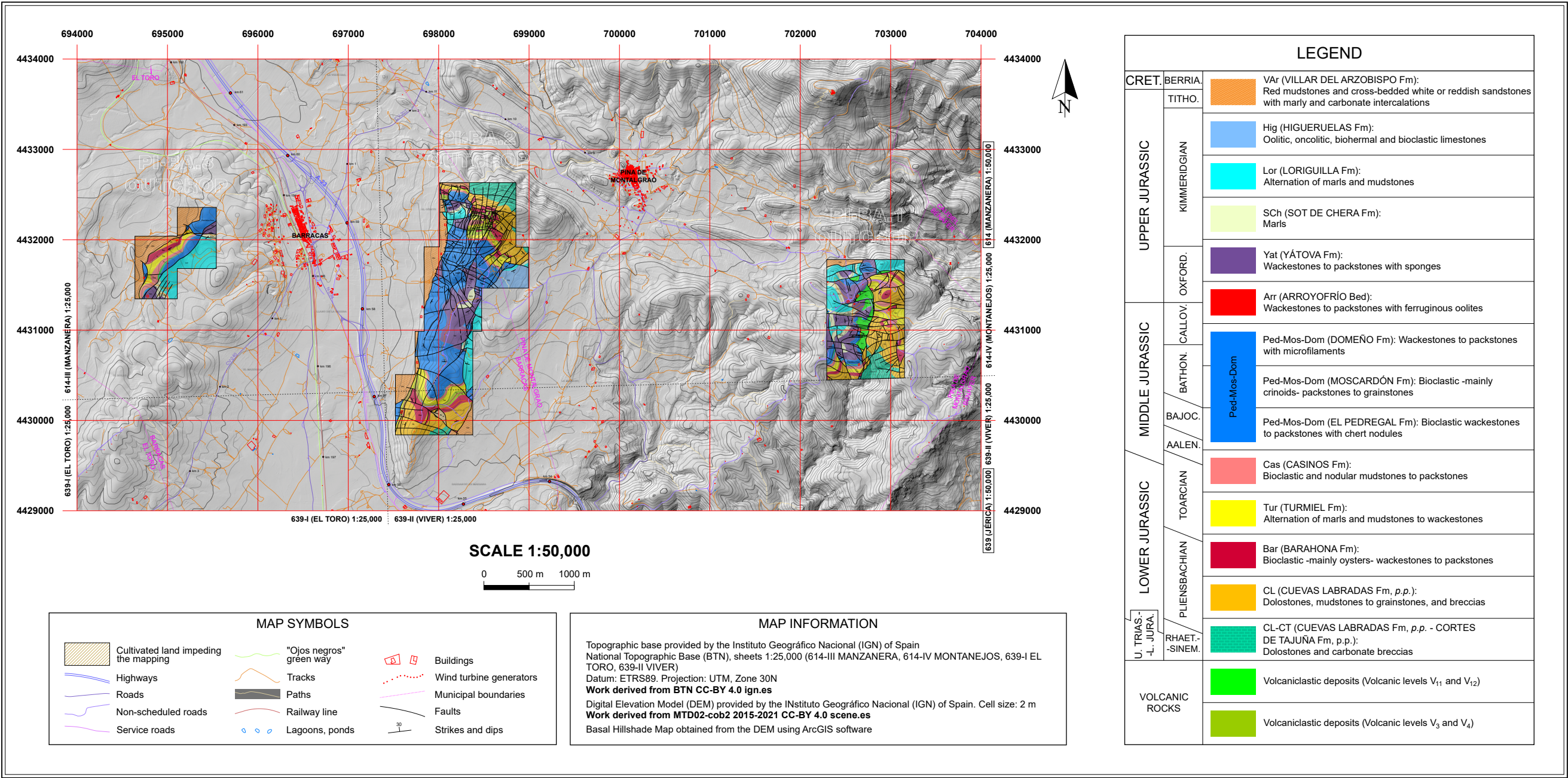


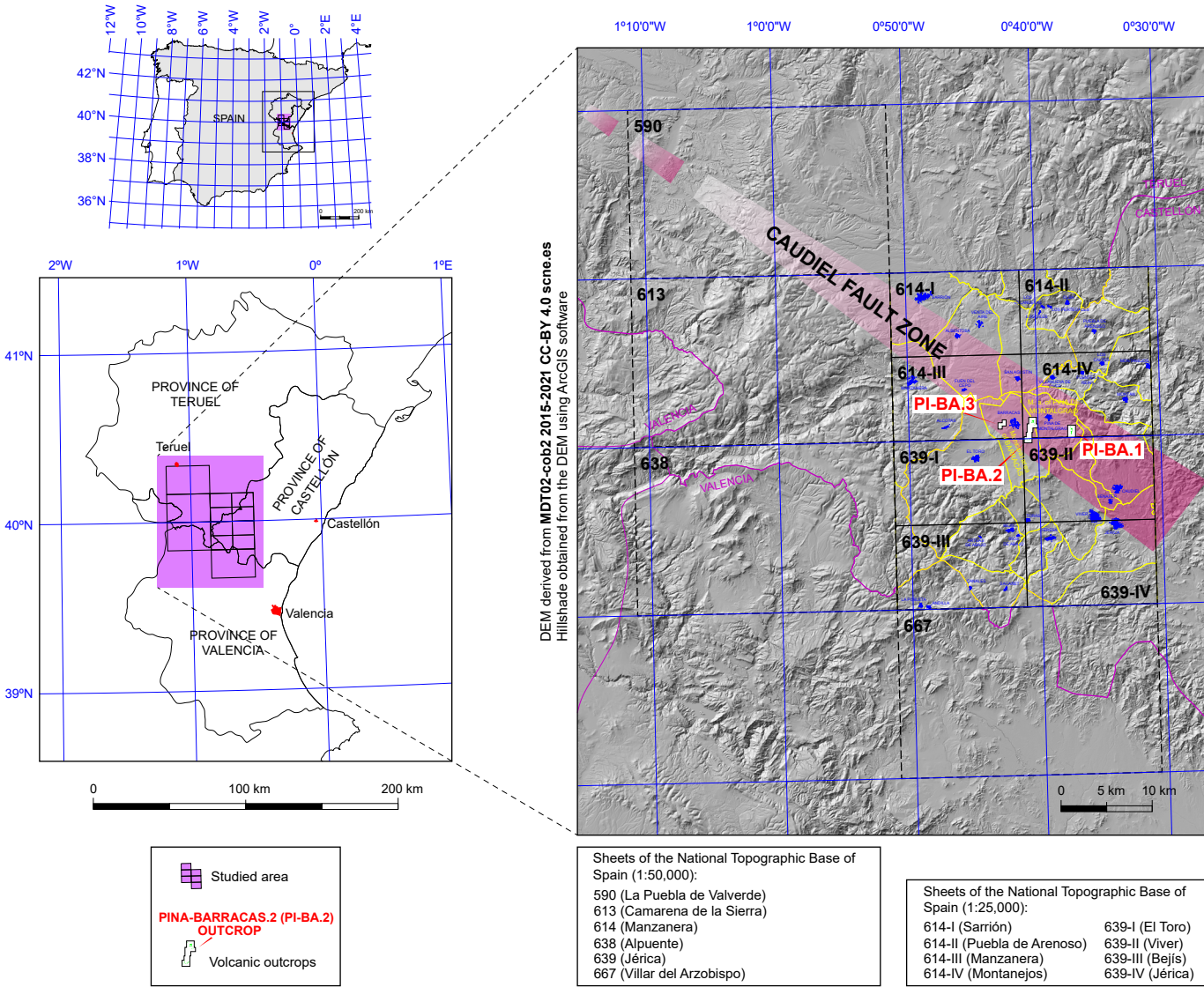
# GEOLOGICAL MAPS OF THE PINA-BARRACAS.1, 2, 3 OUTCROPS (SE IBERIAN RANGE, SPAIN)

J. EMILIO CORTÉS  
Departamento de Geodinámica, Estratigrafía y Paleontología, Facultad de Ciencias Geológicas, Universidad Complutense de Madrid  
jocortes@ucm.es

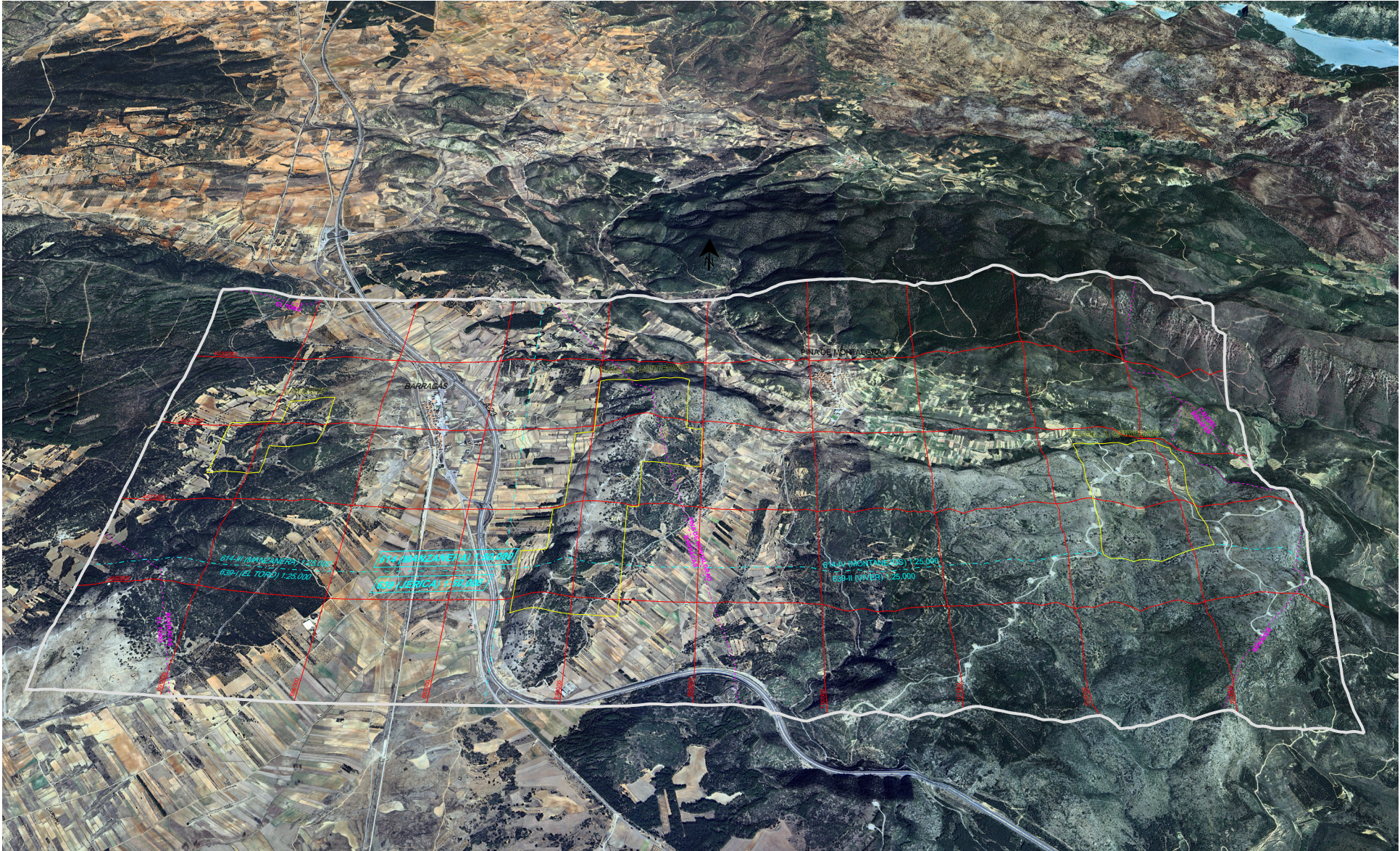
1) 2D GEOLOGICAL MAPS



2) REGIONAL LOCATION OF THE GEOLOGICAL MAPS



3) AERIAL VIEW OF THE PINA-BARRACAS OUTCROPS FROM GOOGLE EARTH



4) 2D VOLCANIC LEVELS ( $V_3$ ,  $V_4$ ,  $V_{11}$ ,  $V_{12}$ ) LOCATION OVER THE CLIPPED ORTHOIMAGE (Work derived from Orto-SIGPAC 1997-2003 CC-BY 4.0 scene.es)

